

SATs

2023-24



Changes for 2023-24

- **Year Two Tests are recommended.**
- **The tests reflect the new curriculum**
- **They will take place in May and June**
- **The tests will not be timed**
- **There will be four different papers**
- **Writing standards are not “all” on a tick list more a “best fit” model with greater emphasis on composition.**

Reading



READING

All children will complete both papers

Paper 1 50% approximately 20 marks (30mins)

- The paper will have a selection of texts containing approximately 400-700 words

Paper 2 50% approximately 20 marks (40mins)

There will be a reading booklet containing approximately 800-1100 words and a separate answer sheet booklet.

Examples of the style of the tests

- The teachers will be advised of the timings although these are approximate
- The tests will contain fiction, non-fiction and poetry and the questions will get harder as the test progresses
- Teachers will be allowed to stop the test for a child who is struggling to answer.

Information

- The format of the answers will be similar to previous years (We will do lots of similar work in class with them so don't worry.)
- Matching boxes to text
- Multiple choice
- Labelling
- Finding a word that means a particular thing
- Open ended questions

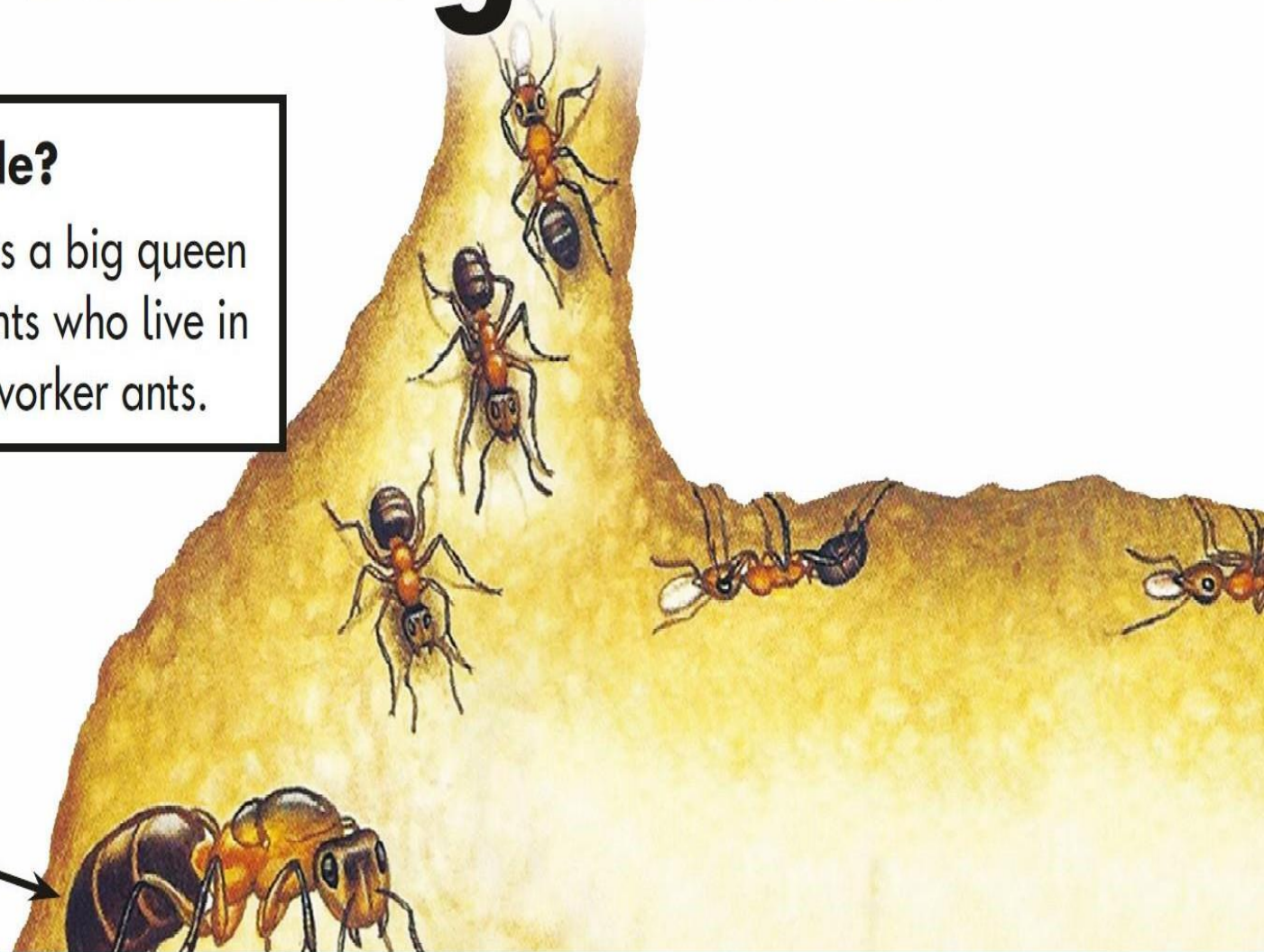
Ants underground

Who lives inside?

Inside the nest lives a big queen ant. Most of the ants who live in the nest are busy worker ants.

Queen ant

The queen ant spends all her time laying eggs.



The Blackbird and his Wife

Once upon a time there lived a blackbird and his wife. They sang so sweetly that everyone passing beneath the tree would stop and listen. It was the most beautiful music; it was as though gold and silver rain were falling into your ears.

One day the king was passing and he heard the two birds singing. He said to his servants, "Catch those birds! I will keep them in a silver cage and they will sing to me." So the servants set a trap, but they only caught one of the birds: the blackbird's wife. They put her into a silver cage and hung her over the king's bed. But she was so sad that she wouldn't sing at all.

As for the blackbird, when he saw that his wife had been trapped, he was angry. He took a sharp thorn for a sword and took half a walnut shell and wore it as a helmet. With the other half, he made himself a little drum. Soon he was marching towards the palace, beating the drum: rat-tat-tat.



Spelling, Grammar and Punctuation



Spelling

- Paper 1
- This will be given to all children and will include
- Listening to a sentence and adding a word (spelling must be accurate – 20 words in all)
- A guide time of 15-20 minutes – not dissimilar to previous years
- Understanding and being able to use the spelling rules taught in school will be the aim.

6. Mark schemes for Paper 1: spelling

Information relating to the content domain reference codes can be found in the key stage 1 English grammar, punctuation and spelling test framework.

Table 1: mark schemes and content domain references for Paper 1

Qu.	Spelling	Mark	Content domain reference
1	faster	1	S7 – Adding <i>-er</i> and <i>-est</i> to adjectives where no change is needed to the root word
2	sunny	1	S26 – Adding <i>-ing</i> , <i>-ed</i> , <i>-er</i> , <i>-est</i> and <i>-y</i> to words of one syllable ending in a single consonant letter after a single vowel letter
3	face	1	S15 – The /s/ sound spelt <i>c</i> before <i>e</i> , <i>i</i> and <i>y</i>
4	group	1	S8 – Vowel digraphs and trigraphs
5	fingers	1	S5 – Adding <i>s</i> and <i>es</i> to words
6	paints	1	S8 – Vowel digraphs and trigraphs
7	kitten	1	S11 – Using <i>k</i> for the /k/ sound
8	thanked	1	S6 – Adding the endings <i>-ing</i> , <i>-ed</i> and <i>-er</i> to verbs where no change is needed to the root word
9	Saturday*	1	S13 – The days of the week
10	sweets	1	S8 – Vowel digraphs and trigraphs
11	baking	1	S25 – Adding the endings <i>-ing</i> , <i>-ed</i> , <i>-er</i> , <i>-est</i> and <i>-y</i> to words ending in <i>-e</i> with a consonant before it
12	knew	1	S16 – The /n/ sound spelt <i>kn</i> and (less often) <i>gn</i> at the beginning of words
13	model	1	S19 – The // or /ə/ sound spelt <i>-el</i> at the end of words
14	whale	1	S10 – New consonant spellings <i>ph</i> and <i>wh</i>
15	world	1	S31 – The /ɜ:/ sound spelt <i>or</i> after <i>w</i>
16	hurried	1	S24 – Adding <i>-ed</i> , <i>-ing</i> , <i>-er</i> , and <i>-est</i> to a root word ending in <i>-y</i> with a consonant before it
17	petal	1	S20 – The // or /ə/ sound spelt <i>-al</i> at the end of words
18	rainbow	1	S12 – Compound words

Maths

$$\frac{1}{2} \quad \frac{1}{3} \quad \frac{1}{4}$$



Maths

There will be Two Papers

These will be given to all children and will include

Paper 1 – Arithmetic – around 25 marks

Confidence and accuracy of answering questions (e.g.: adding 3 one-digit numbers etc.)

It will cover the four basic rules of addition, subtraction, multiplication and division.

SEE EXAMPLES

12

$$50 - \boxed{} = 20$$

Maths

There will be Two Papers

Paper 2 – Reasoning around 35 marks

Multiple choice containing various types of questions:

- true or false
- completing tables or charts
- money calculations and problems above £1
- word problems etc.

SEE EXAMPLES

17

Sam is collecting cards.

He wants to collect **100** cards altogether.

Last week he collected **50** cards.

This week he collects **30** cards.

How many **more** cards does he need?



cards

No equipment - 100
squares, cubes, or number-
lines not to be used!



Reporting to Parents

Your child will be given a grade telling you if they have reached the expected standard.

Children will be given a standardised score.

You will be told, prior to the end of the year if your child is below the expected standard so you should not be shocked.

Look on our website at our Engayne End of Year Expectations

These are used by teachers to assess your child.

HOW CAN YOU HELP?....

Please support your child all year. Read to and with them to aid vocabulary, pace and expression (3 x a week). Look at the kind of questions that your child will be expected to complete at KS1. Letter to follow re purchasing CPG books for support.

Attendance and punctuality are an essential part of success. The curriculum is pacy. Assembly time is used to assist the children.

Do not pressurise your child – be positive.

Please visit our website to see our Calculations Policy and the link to KS1 past papers and revision games.

<http://www.satspapers.org.uk/Page.aspx?TId=4>

<http://www.bbc.co.uk/bitesize/ks1/maths/>

Thank you so much for your support.

