

Welcome to Engayne Primary School



**New Reception Parents'
Intake Meeting 2024**



Engayne Values

- **Respect** each other
- **Belonging** together
- **Responsibility** now and forever



Engayne 'Houses'

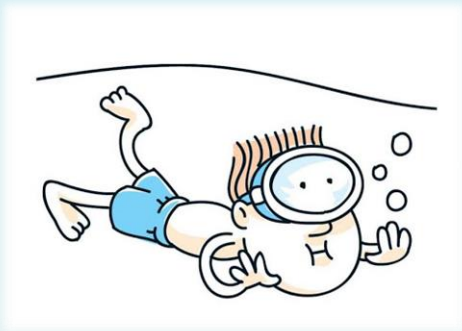
Please provide your child with a plain t-shirt the colour of their house.



A small coloured sticker will be on your child's book bag to indicate what colour house they are in.

Swimming

The children experience taster sessions in small groups starting in the Spring term.





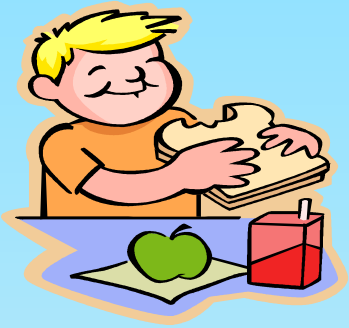
Breakfast Club



Breakfast club is run in-house by Teaching Assistants.

As well as hot and cold food children have access to a variety of activities; arts and crafts, reading books, board games, small world toys and laptops.

Please contact **Mrs Claire Sims** in the school office.



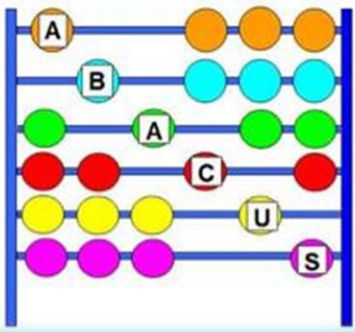
Lunch

- School Dinners- Once your child starts school you can register for ParentPay. You will be able to view and select your child's school dinner. School meals are provided by Havering Catering and cooked onsite. There are 3 choices on the menu for each day. An example menu can be found on Havering catering website.

<https://www.haveringcatering.co.uk/schooldata/test-engayne-primary/>

- Packed Lunches - Engayne is a Healthy school. Please see food policy on the school website
- Cutlery- If the food you provide in the lunch box needs cutlery please provide it. For example if your child has a yogurt please put a spoon in lunch box.





ABACUS

After-School Club

After school club runs until 6pm in our KS1 hall and is operated by our partners 'Abacus' who are an Ofsted registered pre and post school provider. Please ring Abacus directly for information regarding pricing and availability. Contact information can be found on the school website.

School Day

8:45-doors open

8:55- Register is taken/ School gate is closed

3:05- Children are collected using a password system.



Letters - Parent Pay



In September you will be given an activation letter with a code so you can sign up to Parent Pay. Letters are only sent out via this system as we are now a paperless school. Messages can also be sent via class Dojo again an activation letter will be given to you.



Attendance



- Attending every day is exceptionally important to pupil well-being and progress.
- Attendance is closely monitored, the borough deems any child at under 90% attendance as 'persistently absent' (7-10 days)

Pupil Premium

It is important to apply for pupil premium if you feel you are eligible even though all children are entitled to free school meals in Key Stage One.



Reception

Early Years Foundation Stage

- The EYFS provision and practice is based on an observation of children's needs, interests and stages of development. Learning and development in school are planned to reflect these interests and individual circumstances in order to provide each child with a challenging and enjoyable experience.
- At Engayne we recognise that parents/carers are children's first educators and we encourage a partnership with the school to continue and enhance your child's learning.
- There are seven areas of learning and development that must shape education programmes in EYFS settings. These are split into two important and interconnected sections - prime and specific.

Reception

Early Years Foundation Stage

3 Prime Areas -

- Communication and Language
- Personal Social and Emotional Development
- Physical Development

4 Specific Areas of Learning -

- Literacy
- Mathematics
- Understanding the World
- Expressive Arts and Design



Part Time Sessions

Morning sessions are for children born after 1/3/20

Afternoon sessions are for children born before 28/02/20

	AM session	PM session
Wednesday 4 th September - Friday 6 th September	9:30-12:15 with a hot free school lunch.	1-3:05 no lunch
Monday 9 th September - Thursday 12 th September	9:30-11:45 no lunch	12:30 - 3:05 with a hot free school lunch
Friday 13 th September	ALL CHILDREN FULL TIME	ALL CHILDREN FULL TIME



Full Time Start

- Full time from **Friday 13th September**
- **8.45am for 8.55am - 3.05pm**





Information Packs

- Parental permission (trips, photos, food tasting etc)
- Password for collection
- All about me

Prospectus Can be found on the
school website



- Find extra information regarding school rules and policies. Please note children are not allowed to wear earrings.
- INSET DAYS

We look forward to meeting you and the children.



Mrs Sankey
Head teacher



Miss Pumfrett
Fleet Class
teacher

Foundation
Stage Leader



Mrs Clements
Trent class
teacher



Mrs Brewis
Avon class
teacher